

VPN ACCESS TO SHARED FOLDERS (G DRIVE) FOR MAC USERS

1. Go to <https://vpn.umaryland.edu>
2. Choose **SSW** from the Drop Down box and enter your **myumb userid** (the same one for **Blackboard** or your **timesheet**).

Please enter your username and password.

USERNAME:

PASSWORD:

GROUP:

3. Click on the **Mac OS X 10.6X (Intel)** link



WebLaunch

- Platform Detection
- ActiveX
- Java Detection
- Java
- Download
- Connected

Manual Installation

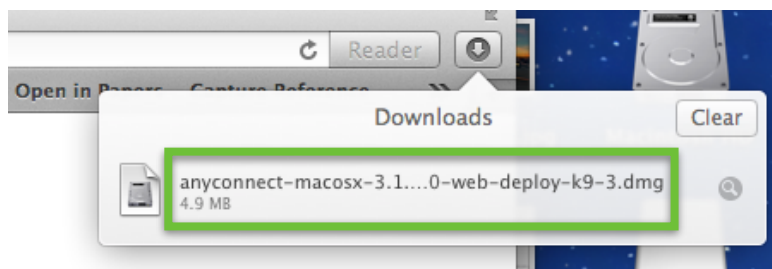
Web-based installation was unsuccessful. If you wish to install the Cisco AnyConnect Secure Mobility Client, you may download an installer package.

Install using the link below:

[Mac OS X 10.6+ \(Intel\)](#)

Alternatively, [retry](#) the automatic installation.

4. Go to your **Downloads Folder** or **Arrow in Safari** and double click on **anyconnect** file

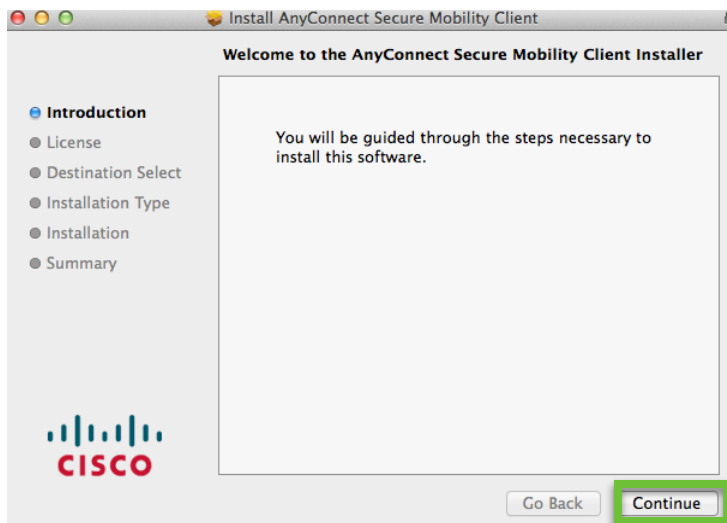


VPN ACCESS TO SHARED FOLDERS (G DRIVE) FOR MAC USERS

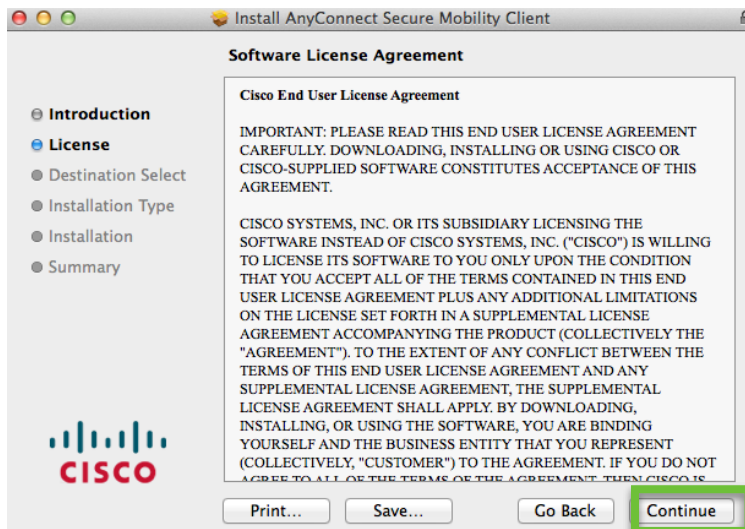
5. Double click on vpn.pkg file



6. Click on **Continue**

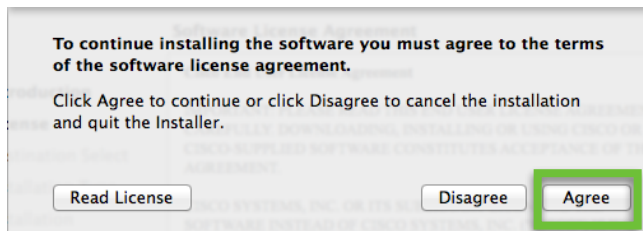


7. Click on **Continue**

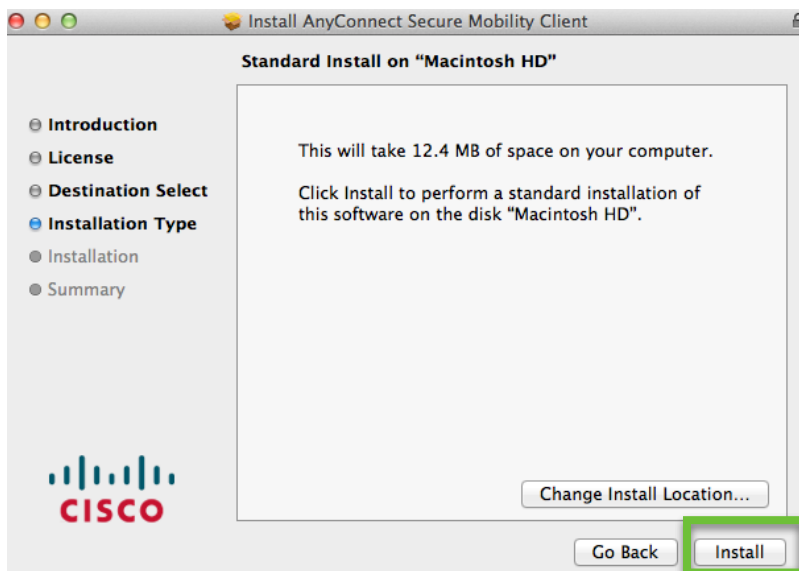


VPN ACCESS TO SHARED FOLDERS (G DRIVE) FOR MAC USERS

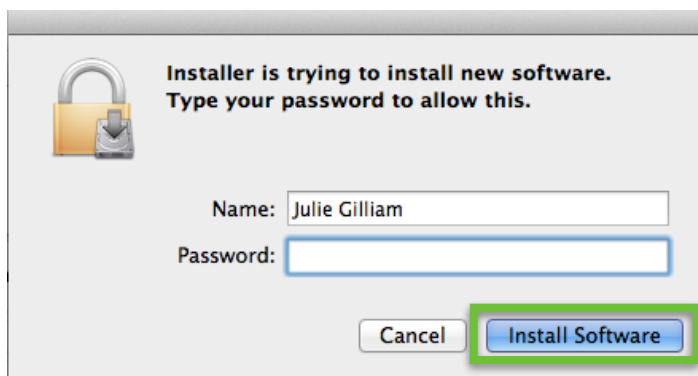
8. Click on **Agree**



9. Click on **Install**

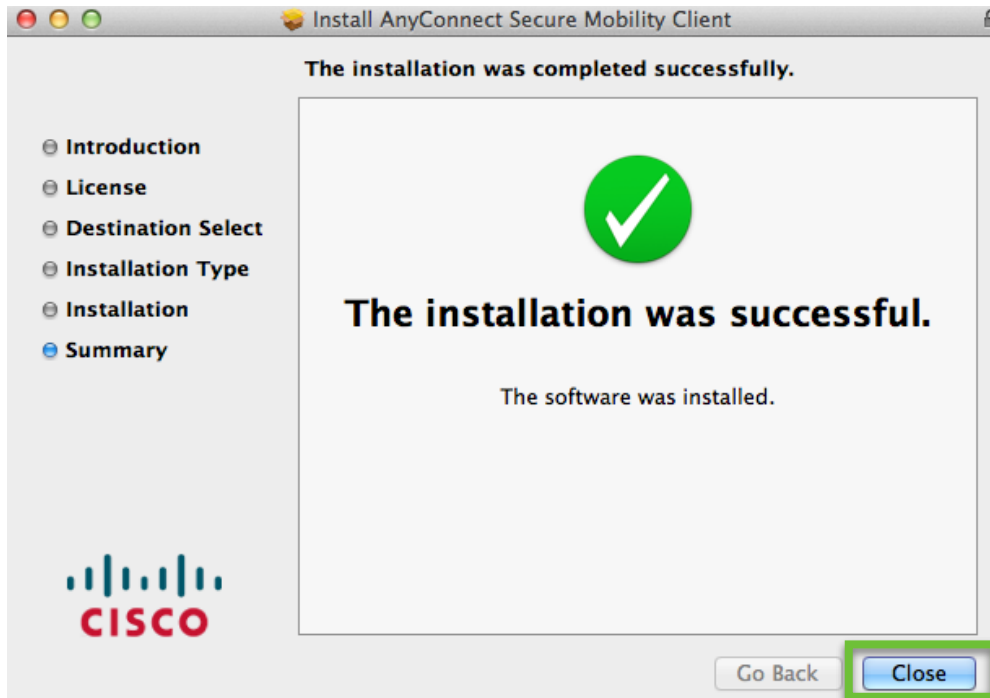


10. Enter your **computer password** for your Mac and click on **Install Software**



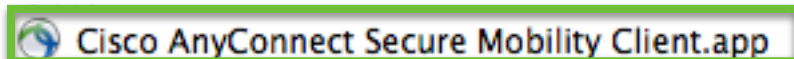
VPN ACCESS TO SHARED FOLDERS (G DRIVE) FOR MAC USERS

11. Click on **Close**

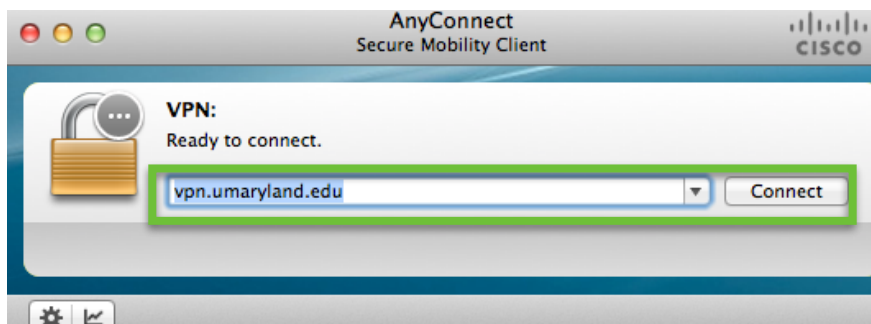


12. Go to Application Folder in a New Finder Window by clicking on **Command N**

13. **Click Applications** and go to the Folder that states **Cisco** and click on **Cisco AnyConnect**

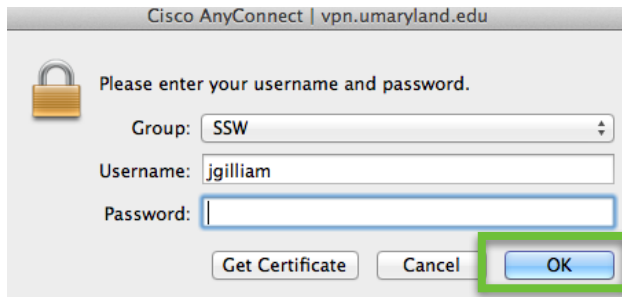


14. **Double click** on **Cisco AnyConnect** and type vpn.umaryland.edu under the **Ready to connect.** box and click on **Connect**



VPN ACCESS TO SHARED FOLDERS (G DRIVE) FOR MAC USERS

15. Enter your enter your **myumb userid** (the same one for **Blackboard** or your **timesheet**) make sure your Group States **SSW** and **click OK**.



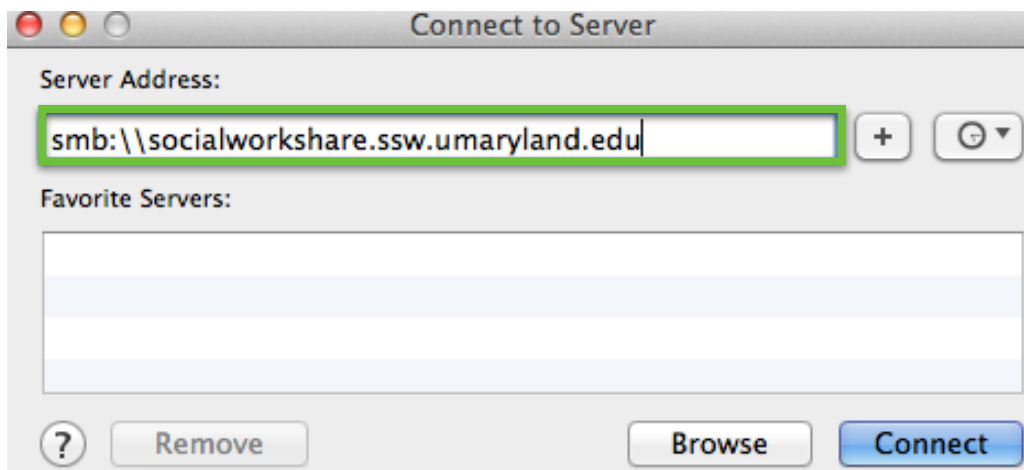
16. You should see the Cisco icon on the top upper right of your screen. It will have a lock near the Icon stating it is connected.



17. Go to your **Finder Window** by clicking on **Command N** at the same time

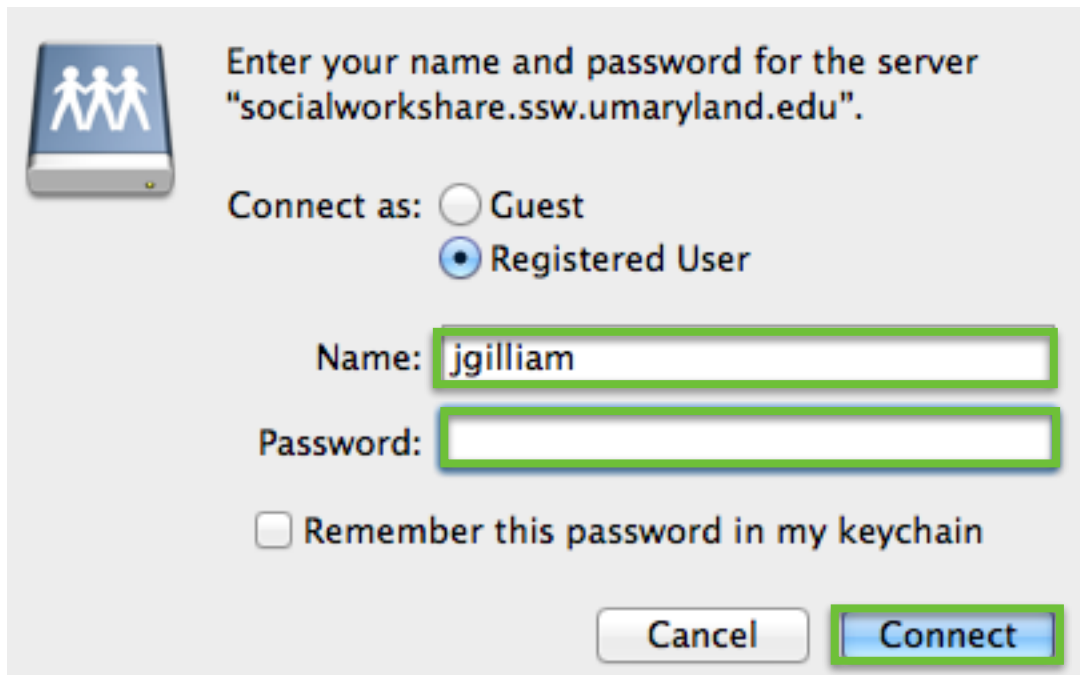
18. Click on Go and Click on Connect to Server
(Please note you have to be logged into the VPN to gain access.)

19. Enter the following in the **Server Address:**
smb://socialworkshare.ssw.umaryland.edu and **click on Connect**



VPN ACCESS TO SHARED FOLDERS (G DRIVE) FOR MAC USERS

20. Enter your **email userid** and **password for your email** and click **Connect**



The screenshot shows a Mac dialog box for connecting to a server. On the left is an icon of a server rack with three figures. The text reads: "Enter your name and password for the server 'socialworkshare.ssw.umaryland.edu'." Below this, there are two radio buttons: "Guest" (unselected) and "Registered User" (selected). There are two text input fields: "Name:" containing "jgilliam" and "Password:" which is empty. Below the password field is a checkbox labeled "Remember this password in my keychain" which is unchecked. At the bottom right are two buttons: "Cancel" and "Connect".

Enter your name and password for the server "socialworkshare.ssw.umaryland.edu".

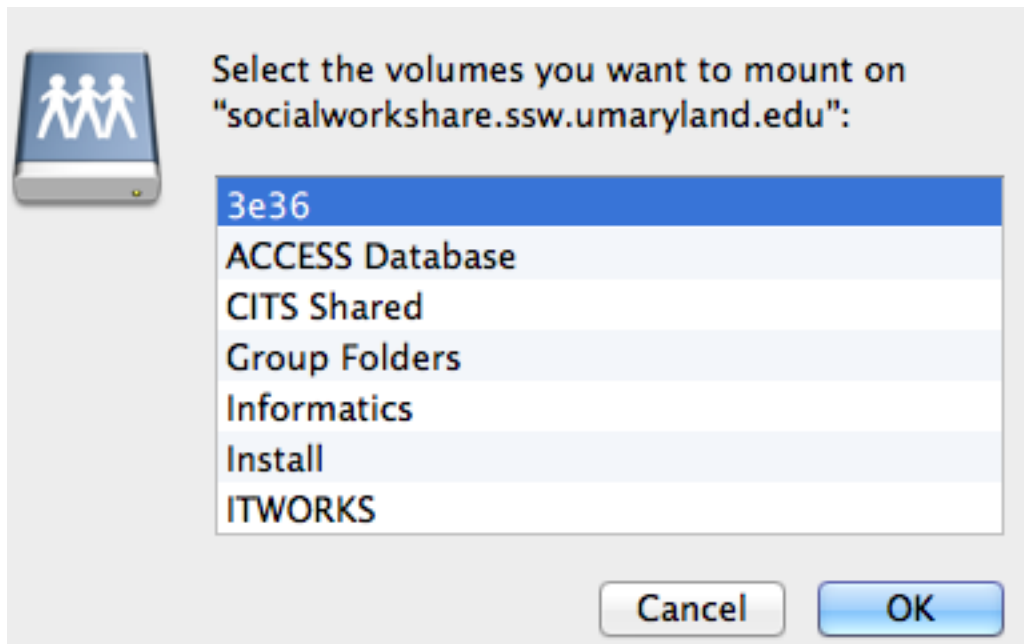
Connect as: Guest
 Registered User

Name:

Password:

Remember this password in my keychain

21. To get to Group Folder click on Group Folders and click ok.



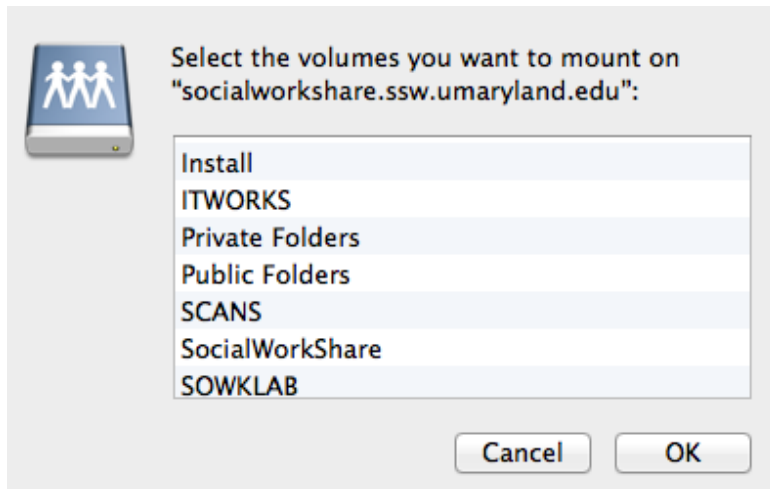
The screenshot shows a Mac dialog box for selecting volumes to mount. On the left is the same server rack icon. The text reads: "Select the volumes you want to mount on 'socialworkshare.ssw.umaryland.edu':". Below this is a list box containing the following items: "3e36" (highlighted in blue), "ACCESS Database", "CITS Shared", "Group Folders", "Informatics", "Install", and "ITWORKS". At the bottom right are two buttons: "Cancel" and "OK".

Select the volumes you want to mount on "socialworkshare.ssw.umaryland.edu":

- 3e36
- ACCESS Database
- CITS Shared
- Group Folders
- Informatics
- Install
- ITWORKS

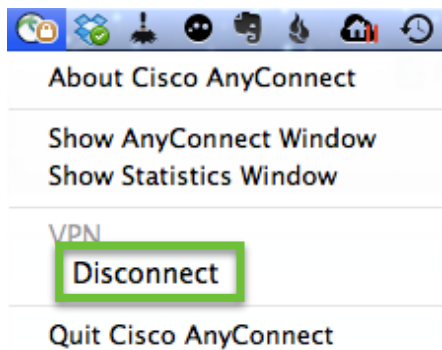
22. To access Private or Public Folders - Scroll down till you find that option and **click** on the appropriate option and click **OK**.

If you do not see your folders in your **Finder Window** - **don't panic**.
Just wait a few minutes and **it will come up** - **TRUST ME**.



*****23. IMPORTANT

Once you are done with accessing what you need, go back up to Cisco Any Connect on the right hand corner of your screen and click on **Disconnect**



24. Next Time you get connected, you need to start **Cisco AnyConnect** by clicking on it on the upper right hand corner and follow the Instructions to **Access the Server** starting on Step 18.