

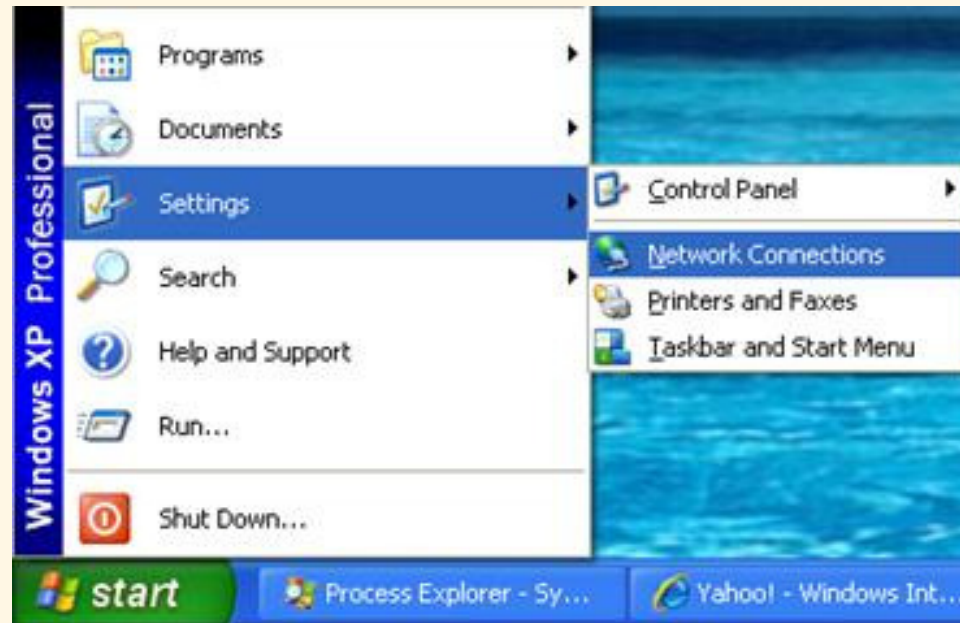


Wireless Setup

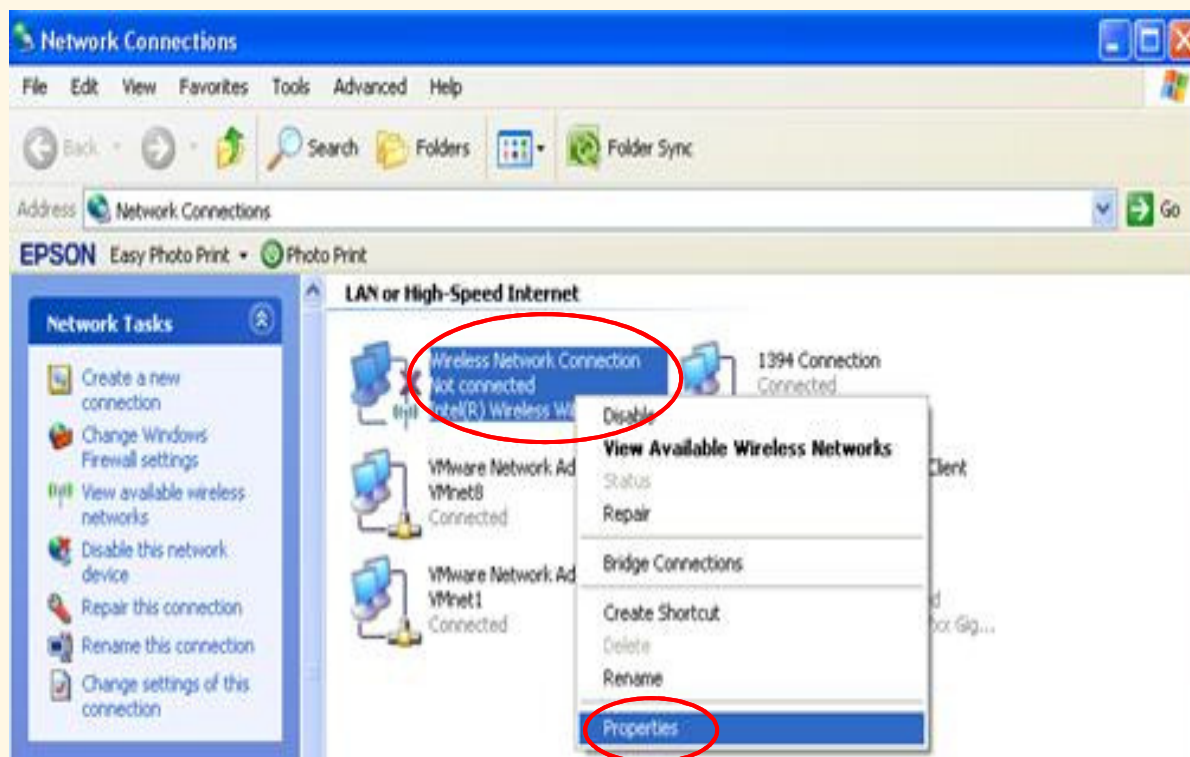
WinXP (No Supplicant)

Go to:

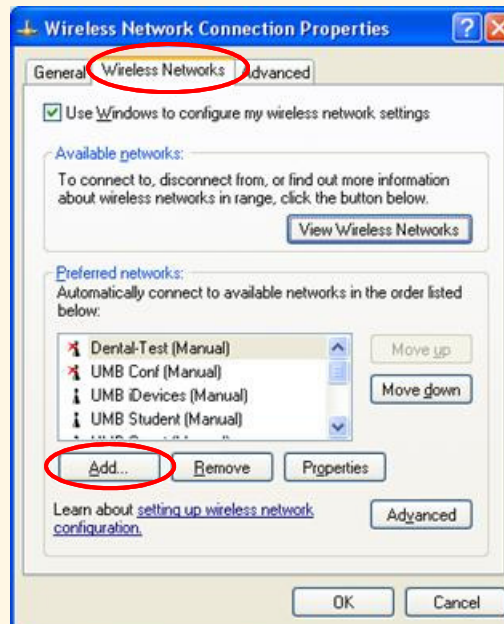
Start > Settings > Network Connections



Right-Click **Wireless Network Connection** Select: **Properties**



Click to select the **Wireless Networks** Tab
Select Add...

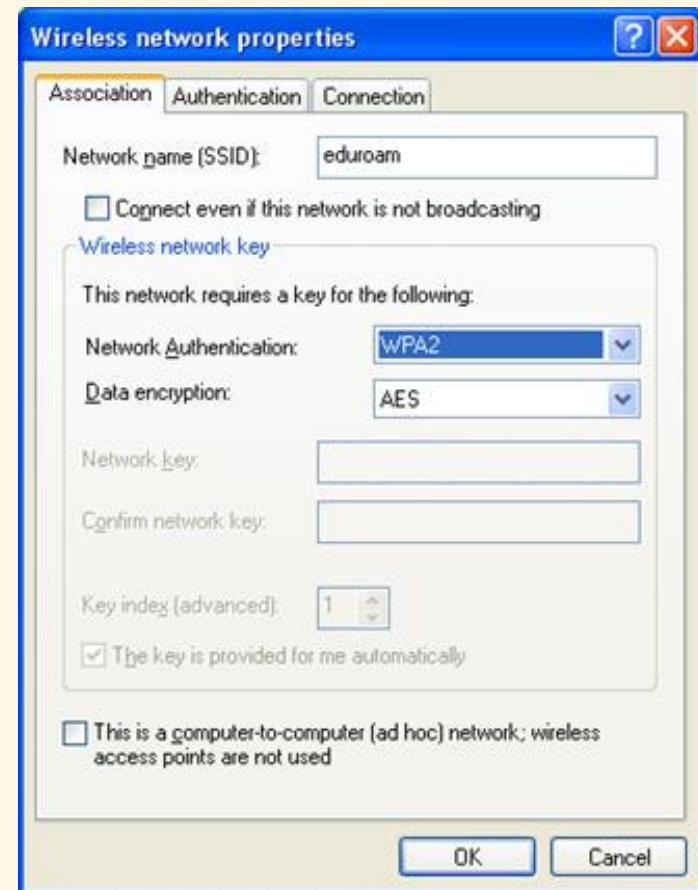


On the **Association** tab, verify these settings:

Network Name (SSID): **eduroam** (Case Sensitive)

Security Type: **WPA2**

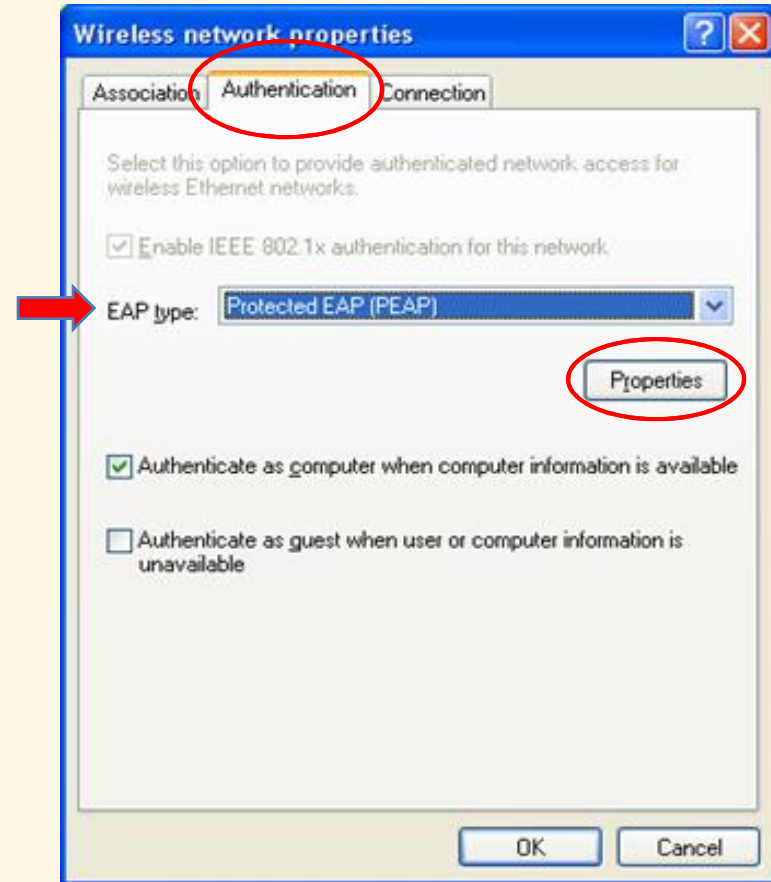
Then Select the **Authentication** Tab



On the **Authentication** tab, verify these settings:

For EAP type: **Protected EAP (PEAP)**

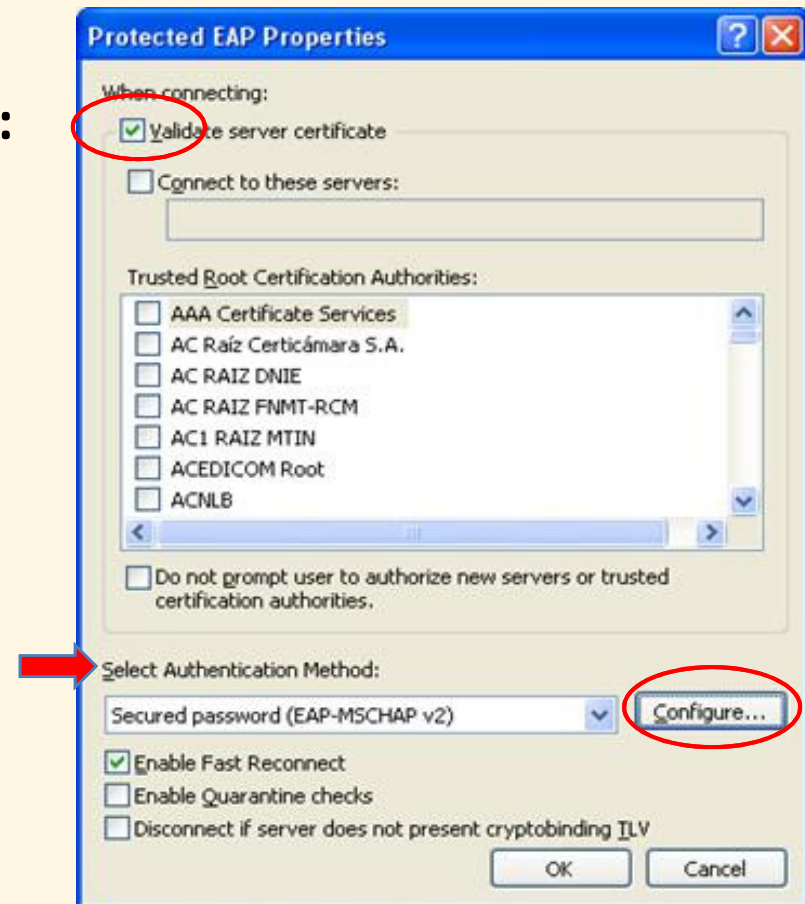
Select **Properties**



Protected EAP Properties

Uncheck Validate server certificate

Under **Select Authentication Method:**
Select **Configure...**

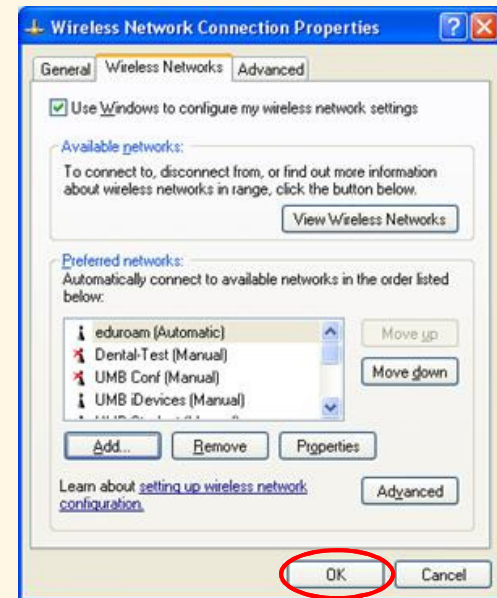
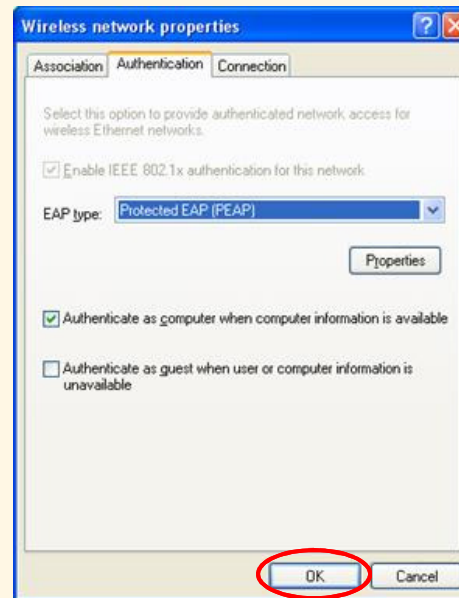
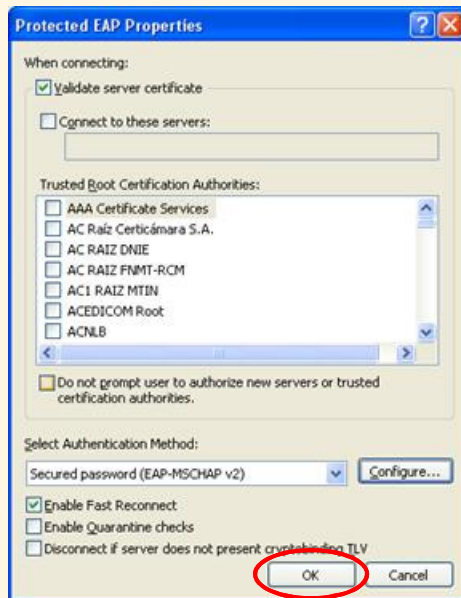


Un-check the selection box for

Automatically use my Windows logon name and password (and domain if any)



Close all Windows

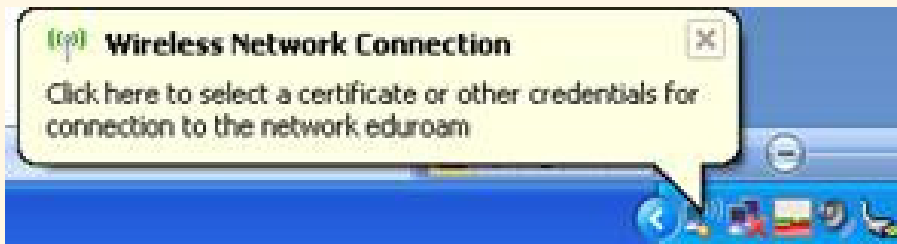


Login, using
UMID@eduroam.umaryland.edu

For Example:
jdoe@eduroam.umaryland.edu

Enter you UMID Password

Select **OK**



University of Maryland – the Founding Campus

To Get Help, Contact:

CITS IT Help Desk

Email: help@umaryland.edu
Phone: 410-706-HELP(4357)
Fax: 410-706-4191
Address: 601 W. Lombard Street, Baltimore, MD 21201
Room: 5th Floor, Suite 540

Hours

Mon-Fri 8:00 am – 5:00 pm
Sat-Sun 8:00 am – 5:00 pm (Phone and E-Mail Only)